



GEAR-UP FOR SDWAN?

Expanding business applications, increasing investment to enhance network security across enterprise environments, and growing changes in the network security characteristics are the prominent factors that are driving the growth of SDWAN (software defined wide area network) market. According to the experts, the market is expected to grow from \$6.32 billion in 2014 to \$9.15 billion by the end of 2020 at a CAGR of 6.35% and almost 30-40% of the enterprises will have SD-WAN by the end of 2020.

BUT, DOES THIS REALLY MAKES A DIFFERENCE TO YOUR BUSINESS?

what about the high cost of the solution? It's unreliable performance? Is it really secure?

These questions might have put a seed of suspicion in your mind about the performance and reliability of SD-WAN, but that's merely an illusion.



Issues faced by the Enterprises today:

- Lack of Brownout Protection: Everyone is well aware with the blackout situation, whenever is the link failure then traffic shifts to the alternative but what id the link quality is not good enough for your applications?
- Costly investment: equipment cost, connectivity cost and the maintainance cost together makes a costly investment solution.
- Unscalable solution: Suppose a xyz service provider may have there presence across the country but not everywhere such as Uganda or thiruvalla, then one single service provider may not have reachablity or service in this area, then how to connect?
- Highly skilled technicians: Big problem with multi branch is when you are deploying equipment in multiple branches, then problem is the technical manpower.

Why service providers needs sdwan today?

Service providers are generally challenged to maintain business service revenue and profit streams in the face of bandwidth commoditization(for eg: high speed, cost effective internet)

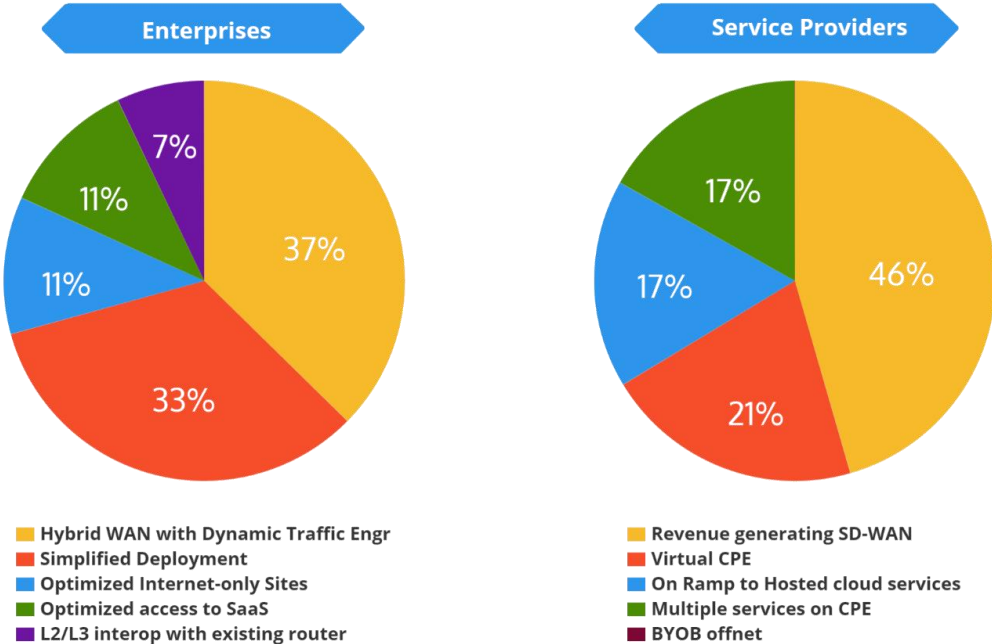
SDWAN solution is enabling service providers to increase the value of their managed services and by selling such services they roughly collects \$40 billion per year with a good profit margin.

Also, this is increasing the area of their service earlier the service providers were limited to provide the last mile.

Top SDWAN Deployment Considerations

Following figure shows the Top SDWAN Deployment scenarios as per the enterprises and service providers then majority of the enterprises are adopting SDWAN as hybrid WAN, where they accept to augment their existing MPLS network with one link as MPLS and the other as Internet. Whereas, Majority of service providers are moving for SDWAN as it giving them an opportunity to generate revenue.





Internet as an alternative to mpls:

Down the line everything has to be build on internet only. But gradually, if internet will start providing the MPLS kind of quality then only 10% of the clients ill be strict to MPLS but max. will be shifted to internet, where they will find the cost and better quality benefits.

Also, this is the alarming situation for the MPLS service provider to maintain their customers engaged. Thus, making important for them to switch to SDWAN.

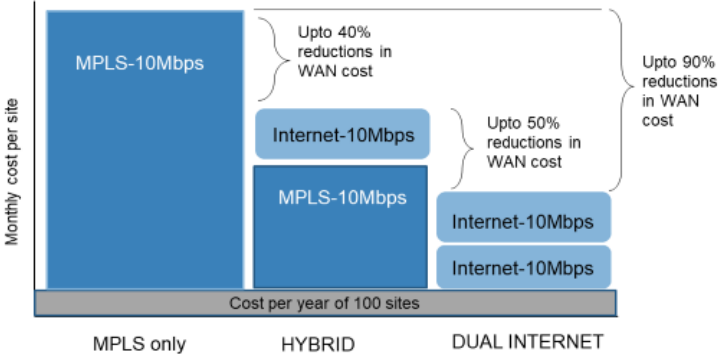


FIG: Internet faster and cheaper than MPLS



Major Concerns On Selecting The right SDWAN solution

Is Internet a safe Alternative to MPLS?

If we talk about Internet as an alternative to MPLS then the first thing which strikes our mind is Security!!!!....

It means do we need an additional firewall too???....

How complicated is the solution?

- Can we have plug and play solution?
- Can we augment existing MPLS network?
- Can it provide zero touch provisioning?
- Can we have software based architecture?

Can we give control of our network to service provider?

This is the question which almost all the enterprises thinks, especially all the financial co-operative banks, like is it safe to expose security policy and business network policies to an SDWAN service provider?

It means your WAN connectivity and its security is managed and controlled by a service Provider?

Does, it means a Bank can say that all my services is managed by xzy service provider?

How effectively your solution understands the applications?

Can SDWAN understands all your applications and implement application aware routing?



Can SDWAN perform application aware routing?

Since, the requirement has become more thicker now, it is important to route based on application now.

Reasons to move towards sdwan

SDWAN gives you a centralized control over your network where you can manage and control all the things centrally in your network. You can now PRIORITIZE applications that need heightened network accessibility.

This solution is giving you personified performance where you can now avoid misleading of you applications and of-course it is providing you high performance and high stability at a lower cost.

Now with SDWAN you have wider visibility in your network, with this you can now monitors activity of the user at the granular level, you can see how much bandwidth is being utilized by a particular application and also which users has utilized how much bandwidth.

Its not only a security centric solution in- fact it provides you soo much scalability so that You may grow your hardware as per the needs of your organization.

And of-course it gives you enough flexibility by providing you zero-touch provisioning along with hybrid WAN where you can non-disruptively augment or replace MPLS network.



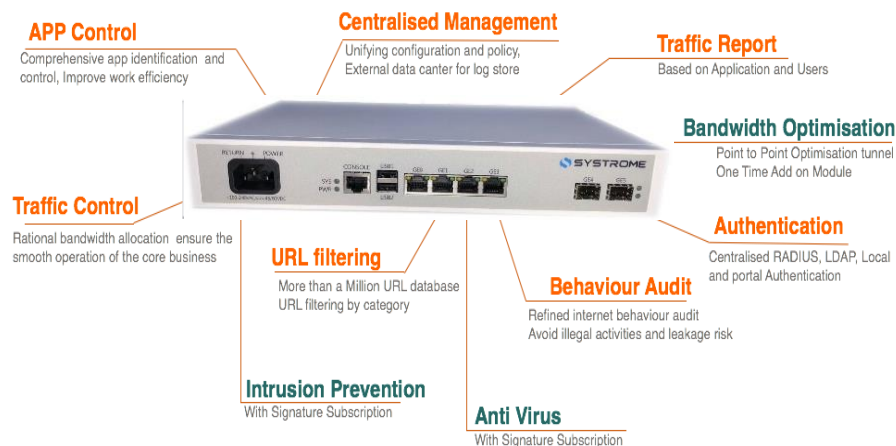
Systrome's Cumilion cloud controlled network:

For Systrome First thing first is the security , Systrome solution has in-built security solution with NGFW. Systrome is providing a security centric solution with centralized control, personified monitoring, scalability, quality of service, wider visibility and of-course enough flexibility.

You may opt. for hybrid network or replace your MPLS with internet with higher speed and lower cost operations. Systrome's SDWAN solution enables deployment in minutes, you can add sites in minutes anywhere in the world, auto provisioning , make the site up and running in minutes.

Systrome's SDWAN comes with complete management and control of your WAN applications and users centralized policies. We have unique centralized URL filtering with local cache of 200k URL, make it possible for centralized white listing and black listing of URL with localized implementation.

Our solution enables employees to be a part of network across physical locations, from home or while travelling, with all security in place.





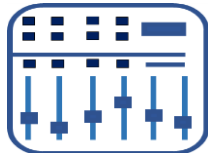
DEPLOYMENT IN MINUTES

Add Sites in Minutes anywhere in world. Auto provisioning and make the site up and running in Minutes..



HYBRID NETWORK

Hybrid or replace your MPLS with secured Internet. High speed and lower Operational Cost...



FULLY MANAGABLE

Complete Management and control of your WAN, APPLICATIONS and Users, Centralized Policy Control.



INTEGRATED NGFW SECURITY

Unlike many other SDWAN , The Cumilon has integrated Next Generation Firewall was with IPS , Antivirus and Stateful Firewall



MOBILE WORKFORCE

Enabling Employees to be part of the network from across physical locations, from home or while travelling, with all security in place



FASTER & CONTROLLED APPLICATION

Application Control and Priority and improved performance for Business cortical applications

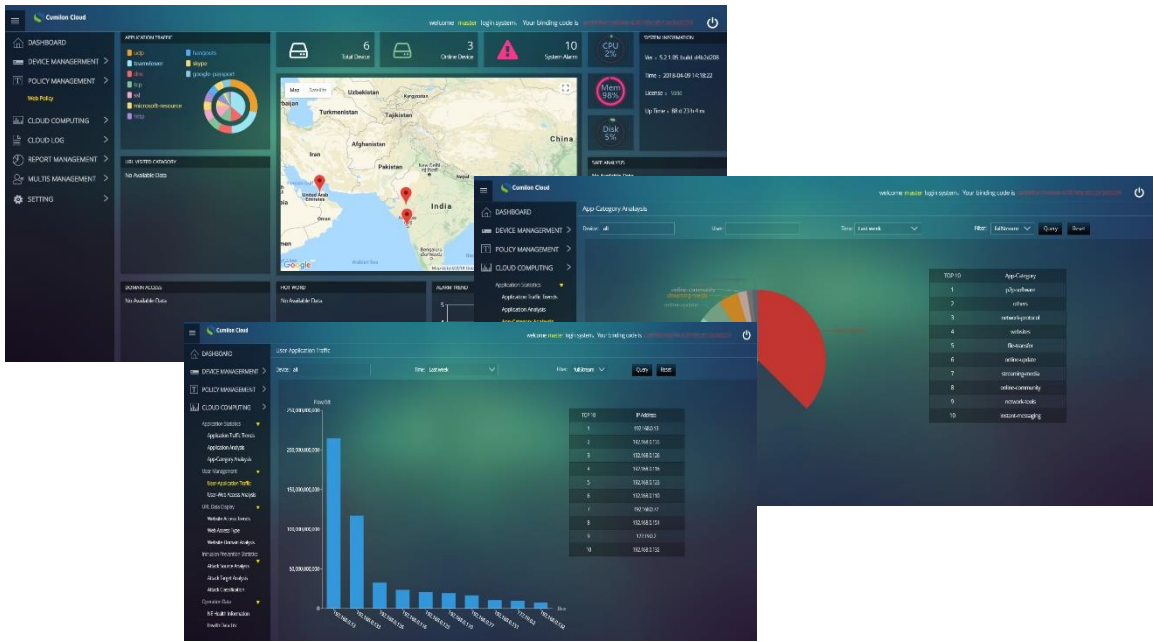


Cloud Based Control

URL Control

Application Control

Multiple Tenant



Traffic Control

AV Policy

IPS Policy

